

# EVOLVE<sup>®</sup> Jade 2 LTE

Outdoor antenna for digital and analog TV reception



## INTRODUCTION:

This is a special designed new concept antenna for digital indoor and outdoor analog and terrestrial HDTV broadcasting reception. It is the best solution for home reception and digital portable TV reception. Complete accessories are included for wall or pole mounting. With the anti-UV and water proof housing, it can be used both indoor and outdoor.

## Technical Data:

- Frequency Range: 470-790MHz
- Receiving range: UHF
- Antenna Gain : 48dBi Max
- Max. Output level: 100dBμV
- Impedance: 75Ω
- Power Supply: DC 5V 200mA
- Noise figure: <4.5dB

## Included in Package:

Before start your installation, please check the contents.

1. Antenna main unit
2. AC/DC adapter
3. Power insert
4. mounting accessories
5. Coaxial cable



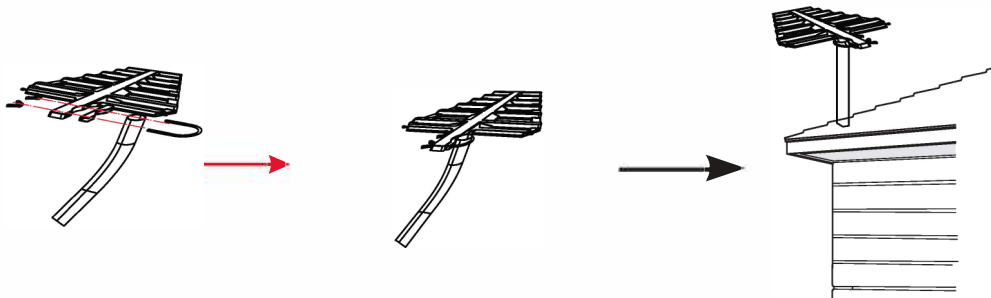
## Product Features:

- Anti-UV coating and waterproof design.
- Lightweight, compact size and easy to install.
- For both analog and digital TV signal reception
- Built-in high gain and low noise preamplifier
- Powered by DTV set-top box or included separate power adapter.
- Specially Compatible with HDTV of various digital terrestrial (DVB-T, ISDB-T, DTMB, ATSC) signal.

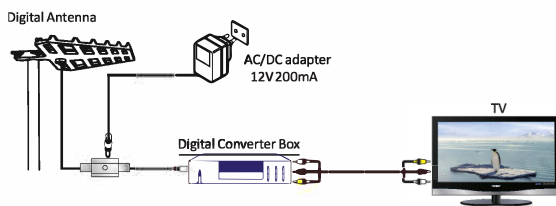
## Mounting the antenna:

This antenna can be used both indoor and outdoor, with the included mounting accessories, it can be mounted on the pole.

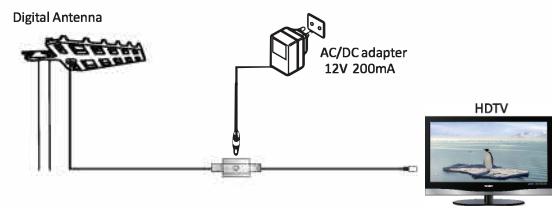
use the pole mounting accessories to fix the antenna on the pole (the J-pole is not included in the accessories.) .



Installation: Please take following installation instruction for reference.



Installation 1: Connected Through digital converter box



Installation 2: Directly connected to HDTV

Note: After the antenna mounting and installation is finished, please adjust the antenna in the best position that can get clear TV picture, then fix the antenna, organize the coaxial cable for neat, tidy and safety,

## Operation Instruction:

Note: For the best reception, please check the following conditions

1. Keep the antenna away from the sources of interference: keep the antenna away from those big power consumption devices, such as air conditioner, elevator, hair dryer and microwave oven...etc.
2. Place the antenna near windows when use the antenna in indoor environment.
3. Install the antenna as high as possible: in digital terrestrial reception, if there are some interceptions between antenna and transmission tower, it will cause the signal loss temporarily. So if the antenna is installed as high as possible, those interceptions will be reduced.

AC 240V/DC 5V power supply used for the antenna amplifier.

Manufacturer's name BRIGHTPOWER OPTPELECTRONIC TECHNOLOGY CO., LTD					
Manufacturer's address Yinyong Industrial Zone, Jinma Road, Hengli Town, Dongguan, Guangdong Province, P.R. CHINA					
Information published	Value and precision	Unit	Information published	Value and precision	Unit
Model identifier	SW0500200-A02		Output power	1,0	W
Input voltage	AC 100-240	V	Average active efficiency	60,4	%
Input AC frequency	50/60Hz	Hz	Efficiency at low load (10 %)	/	%
Output voltage	DC 5,0	V	No-load power consumption	0,1	W
Output current	0,2	A			



Disposal: The symbol of crossed out container on the product, in the literature or on the wrapping means that in the European

Union all the electric and electronic products, batteries and accumulators must be placed into the separate salvage after finishing their lifetime. Do not throw these products into the unsorted municipal waste

## DECLARATION OF CONFORMITY

Hereby, the company Abacus Electric, s.r.o. declares that the EVOLVEO Jade 2 LTE is in compliance with the requirements of the standards and regulations, relevant for the given type of device.

Find the complete text of Declaration of Conformity at <http://ftp.evolveo.com/ce/>

Dovozce / Dovožca / Importer / Importőr  
Výrobce / Výrobca / Manufacturer / Gyártó

Abacus Electric, s.r.o.  
Planá 2, 370 01, Czech Republic

Made in China

Copyright © Abacus Electric, s.r.o.  
[www.evolveo.com](http://www.evolveo.com)  
[www.facebook.com/EvolveoCZ](https://www.facebook.com/EvolveoCZ)

All rights reserved.  
Design and specification may be changed without prior notice.